




A4 FEM1.001

H = Height under hook
 Altezza sotto gancio
 Hauteur sous crochet
 Altura bajo el gancho
 Высота под крюком

LOAD DIAGRAMS 14.0 T / 7.0 T

DIAGRAMMA DI PORTATA / DIAGRAMME DE CHARGE UTILE / CURVAS DE CARGA /
 ДИАГРАММА ГРУЗОПОДЪЕМНОСТИ

14.000 Kg / 7.000 Kg

JIB	24.0	30.0	36.0	40.0	46.0	50.0	56.0	60.0	66.0	70.0	76.0
2,8 ▶	24.0	30.0	25.9	25.8	25.6	25.3	24.7	24.2	22.4	20.4	18.0
15	14000	14000	14000	14000	14000	14000	14000	14000	14000	14000	14000
16	14000	14000	14000	14000	14000	14000	14000	14000	14000	14000	14000
18	14000	14000	14000	14000	14000	14000	14000	14000	14000	14000	14000
20	14000	14000	14000	14000	14000	14000	14000	14000	14000	14000	12430
22	14000	14000	14000	14000	14000	14000	14000	14000	14000	12863	11127
24	14000	14000	14000	14000	14000	14000	14000	14000	12919	11635	10051
26		13979	13967	13898	13744	13561	13186	12931	11786	10606	9148
28		12851	12840	12776	12634	12464	12117	11881	10822	9729	8380
30		11880	11869	11810	11677	11519	11196	10977	9991	8974	7718
32			11024	10969	10845	10697	10395	10190	9267	8316	7142
34			10282	10230	10114	9975	9691	9498	8632	7739	6910
36			9625	9576	9466	9336	9068	8886	8070	7228	6675
38				8993	8889	8766	8513	8340	7568	7050	6277
40				8470	8371	8254	8014	7851	7119	6853	5919
42					7904	7793	7565	7409	6916	6484	5597
44					7481	7374	7157	7009	6753	6151	5304
46					7095	6993	6786	6920	6422	5847	5038
48						6968	6747	6597	6119	5568	4794
50						6655	6443	6299	5841	5313	4571
52							6163	6025	5585	5078	4364
54							5905	5772	5349	4860	4174
56	*						5665	5537	5129	4659	3997
58								5319	4925	4471	3833
60								5115	4735	4296	3680
62									4557	4133	3537
64									4391	3980	3403
66									4235	3837	3278
68										3702	3159
70										3575	3048
72											2943
74											2844
76											2750

* LOAD DIAGRAM FOR SPECIFIC EXERCISE TO ONE TROLLEY / DIAGRAMMA DI PORTATA PER ESERCIZIO SPECIFICO DI 1 CARRELLO

ULTRALIFT _ALL INTERMEDIATE LOADS ARE DECREASED OF 10% IF THE CRANE IS NOT EQUIPPED WITH ULTRALIFT CONTROL / SENZA IL SISTEMA ULTRALIFT TUTTE LE PORTATE INTERMEDIE DIMINUISCONO IL CARICO DEL 10% / LES CHARGES INTERMEDIARES SONT DIMINUEES DE 10% SI LA GRUE N'EST PAS EQUIPE D'UN CONTROLE ULTRALIFT / SIN EL SISTEMA ULTRALIFT LOS MISURA INTERMEDIOS DISMINUIR EL CARICO DEL 10% / БЕЗ ULTRALIFT ПРОМЕЖУТОЧНОЙ УМЕНЬШАЕТСЯ НА 10% НАГРУЗКИ.

TOWER CONFIGURATION - REACTIONS

CONFIGURAZIONE TORRE - REAZIONI / CONFIGURATION TOUR - RÉACTIONS / TORRE DE CONFIGURACIÓN - REACCIONES / КОНФИГУРАЦИЯ БАШНИ - РЕАКЦИИ

2,1 m L = 6,0 m - B

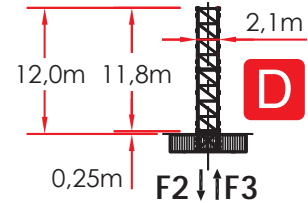
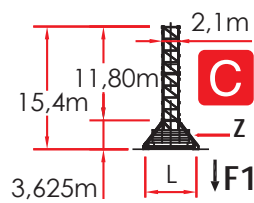
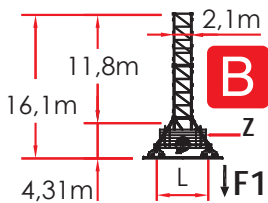
	*H (m)	Z (t)	F1(kN)
8	-	-	-
7	5,9 m	57,6	83,54
6	5,9 m	51,7	83,54
5	5,9 m	45,8	77,08
4	5,9 m	39,9	70,62
3	5,9 m	34,0	70,62
+2	5,9 m	28,1	70,62

2,1 m L = 6,0 m - C

	*H (m)	Z (t)	F1(kN)
8	-	-	-
7	5,9 m	56,7	83,54
6	5,9 m	50,8	83,54
5	5,9 m	44,9	77,08
4	5,9 m	39,0	70,62
3	5,9 m	33,1	70,62
+2	5,9 m	27,2	70,62

2,1 m - D

	*H (m)	F2(kN)	F3(kN)
8	-	-	-
7	5,9 m	53,7	1533
6	5,9 m	47,8	1222
5	5,9 m	41,9	1138
4	5,9 m	36,0	1071
3	5,9 m	30,1	995
+2	5,9 m	24,2	915



N.B.

*H = Telaio di raccordo e spinta incluso
 Climbing cage connection frame including
 Elément de telescopage compris
 Bastidor de enlace de empuje incluido
 Включая boost подгонки фрейма

2,1m L - Booster

	*H (m)	F2(kN)	F3(kN)
9	5,9 m	65,5	2352
8	5,9 m	-	-
7	5,9 m	-	-
6	5,9 m	-	-
5	5,9 m	-	-
4	5,9 m	-	-
3	5,9 m	-	-
+2	5,9 m	-	-



Comply with the specified ballast / Attenersi alla zavorra indicata / S'en tenir au lest indiqué / Respetar el peso de lastre indicado / Соблюдать указанный балласт

