




A4 EN 14439 - C50 - D50

LOAD DIAGRAMS 14.0 T / 7.0 T

DIAGRAMMA DI PORTATA / DIAGRAMME DE CHARGE UTILE / CURVAS DE CARGA /
 ДИАГРАММА ГРУЗОПОДЪЕМНОСТИ

14.000 Kg / 7.000 Kg

JIB	24.0	30.0	36.0	40.0	46.0	50.0	56.0	60.0	66.0	70.0	76.0
2,8 ▶	24.0	24.3	24.2	24.1	23.8	23.3	22.7	22.1	21.2	19.4	16.7
14	14000	14000	14000	14000	14000	14000	14000	14000	14000	14000	14000
15	14000	14000	14000	14000	14000	14000	14000	14000	14000	14000	14000
16	14000	14000	14000	14000	14000	14000	14000	14000	14000	14000	14000
18	14000	14000	14000	14000	14000	14000	14000	14000	14000	14000	13225
20	14000	14000	14000	14000	14000	14000	14000	14000	14000	13859	11688
21	14000	14000	14000	14000	14000	14000	14000	14000	14000	13097	11034
22	14000	14000	14000	14000	14000	14000	14000	14000	13663	12407	10445
23	14000	14000	14000	14000	14000	14000	13952	13584	12979	11781	9908
24	14000	14000	14000	14000	13974	13690	13286	12933	12355	11209	9418
26		12977	12934	12933	12747	12485	12114	11790	11257	10205	8557
28		11915	11876	11875	11702	11460	11117	10816	10324	9349	7824
29		11441	11403	11402	11235	11002	10671	10382	9908	8967	7497
30		11000	10964	10963	10802	10577	10256	9977	9519	8612	7193
32			10170	10168	10019	9808	9508	9248	8819	7971	6827
34			9472	9471	9330	9132	8852	8606	8204	7406	6371
36			8855	8854	8722	8535	8270	8039	7659	6908	5967
38				8304	8179	8001	7752	7533	7174	6644	5607
40				7810	7691	7524	7286	7079	6875	6268	5284
42					7251	7093	6866	6871	6505	5928	4992
44					6490	6991	6735	6519	6170	5620	4728
46					6820	6649	6405	6199	5865	5340	4487
48						6337	6103	5906	5587	5083	4267
50						6050	5825	5637	5330	4848	4065
52							5570	5389	5094	4631	3879
54	*						5334	5159	4876	4430	3707
56							5115	4947	4674	4244	3547
58								4749	4486	4071	3399
60								4565	4311	3910	3260
62									4147	3760	3131
64									3994	3619	3010
66									3850	3487	2897
68										3362	2790
70										3245	2689
72											2595
74											2505
76											2420

* LOAD DIAGRAM FOR SPECIFIC EXERCISE TO ONE TROLLEY / DIAGRAMMA DI PORTATA PER ESERCIZIO SPECIFICO DI 1 CARRELLO

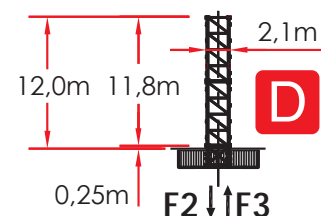
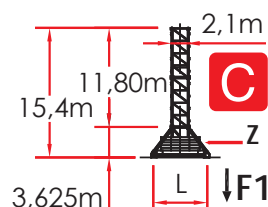
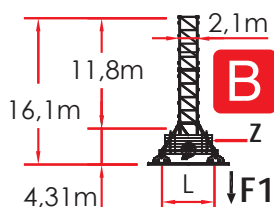
ULTRALIFT _ALL INTERMEDIATE LOADS ARE DECREASED OF 10% IF THE CRANE IS NOT EQUIPPED WITH ULTRALIFT CONTROL / SENZA IL SISTEMA ULTRALIFT TUTTE LE PORTATE INTERMEDIE DIMINUISCONO IL CARICO DEL 10% / LES CHARGES INTERMEDIARES SONT DIMINUEES DE 10% SI LA GRUE N'EST PAS EQUIPEE D'UN CONTROLE ULTRALIFT / SIN EL SISTEMA ULTRALIFT LOS MISAURA INTERMEDIOS DISMINUIR EL CARICO DEL 10% / БЕЗ ULTRALIFT ПРОМЕЖУТОЧНОЙ УМЕНЬШАЕТСЯ НА 10% НАГРУЗКИ.

TOWER CONFIGURATION - REACTIONS

CONFIGURAZIONE TORRE - REAZIONI / CONFIGURATION TOUR - RÉACTIONS / TORRE DE CONFIGURACIÓN - REACCIONES / КОНФИГУРАЦИЯ БАШНИ - РЕАКЦИИ

EN 14439 - C50

2,1 m L = 6,0 m - B				2,1 m L = 6,0 m - C				2,1 m L = 6,0 m - D						
	*H (m)	Z (t)	F1(kN)		*H (m)	Z (t)	F1(kN)		*H (m)	F2(kN)	F3(kN)			
15	2,95 m	59,29	102,92	1368	15	2,95 m	58,39	102,92	1321	15	2,95 m	55,23	2059	1648
14	2,95 m	56,34	102,92	1212	14	2,95 m	55,44	102,92	1168	14	2,95 m	52,28	1823	1421
13	2,95 m	53,39	96,46	1089	13	2,95 m	52,49	96,46	1047	13	2,95 m	49,33	1678	1324
12	2,95 m	50,44	83,54	931	12	2,95 m	49,54	83,54	891	12	2,95 m	46,38	1505	1073
11	2,95 m	47,49	83,54	861	11	2,95 m	46,59	83,54	845	11	2,95 m	43,43	1450	1026
10	2,95 m	44,54	77,08	822	10	2,95 m	43,64	77,08	806	10	2,95 m	40,48	1398	982
9	2,95 m	41,59	77,08	829	9	2,95 m	40,69	77,08	813	9	2,95 m	37,53	1367	959
8	2,95 m	38,64	77,08	810	8	2,95 m	37,74	77,08	794	8	2,95 m	34,58	1409	1009
7	2,95 m	35,69	70,62	776	7	2,95 m	34,79	70,62	760	7	2,95 m	31,63	1305	914
6	2,95 m	32,74	70,62	748	6	2,95 m	31,84	70,62	733	6	2,95 m	28,68	1253	869
5	2,95 m	29,79	70,62	723	5	2,95 m	28,89	70,62	708	5	2,95 m	25,73	1182	806
+4	2,95 m	26,84	70,62	708	+4	2,95 m	25,94	70,62	694	+4	2,95 m	22,78	1147	780



N.B. *H = Telaio di raccordo a spinta incluso
 Climbing cage connection frame including
 Elément de telescopage compris
 Bastidor de enlace de empuje incluido
 Включая boost подгонки фрейма



Comply with the specified ballast / Attenersi alla zavorra indicata / S'en tenir au lest indiqué / Respetar el peso de lastre indicado / Соблюдать указанный балласт