

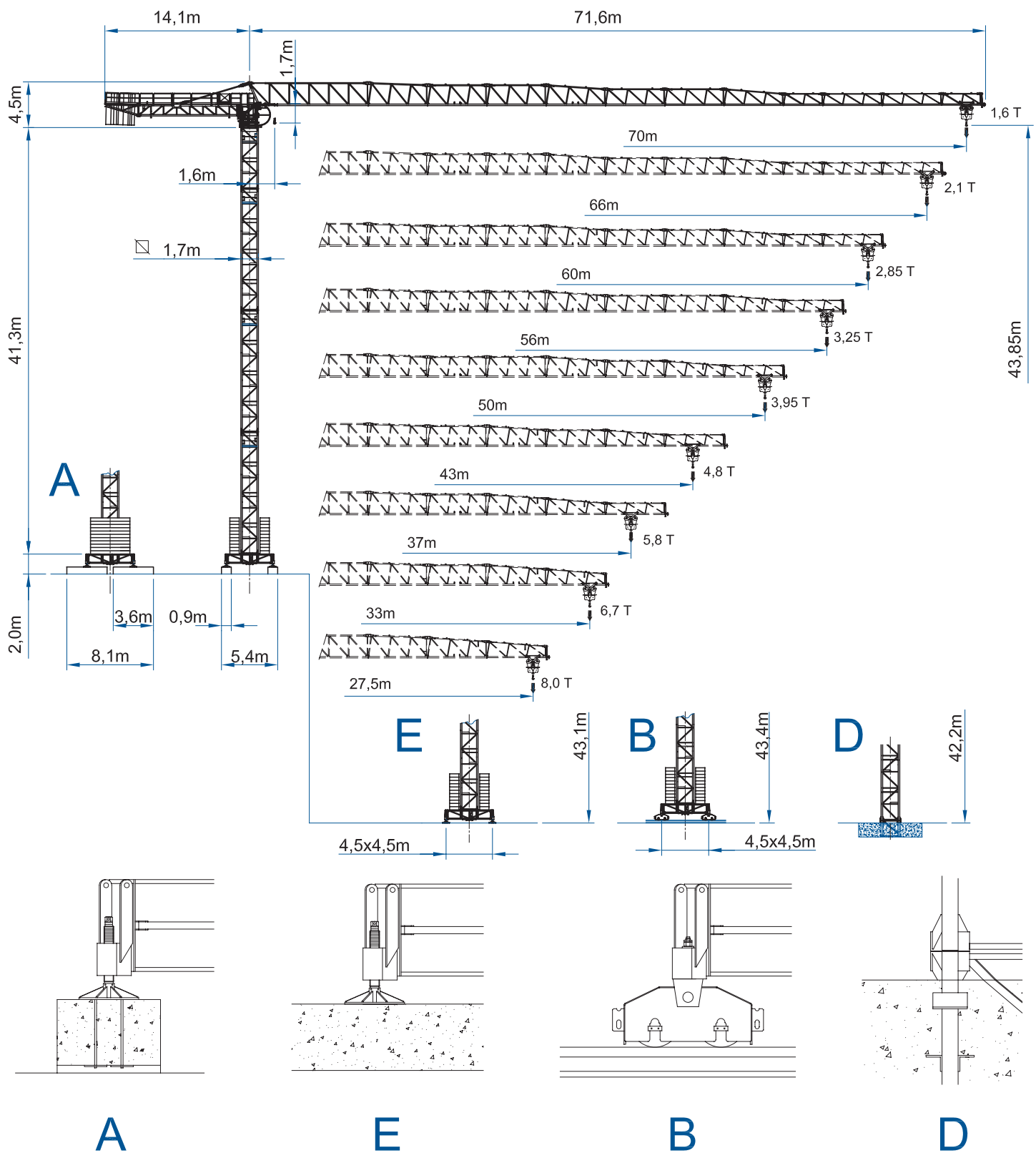
MRT213

GRU DA CITTÀ SENZA CUSPIDE - TOP LESS CITY CRANE
CITY CRANE SANS POINCON - CITY KRAN OHNE TURMSPITZE

RAIMONDI








A3 FEM1,001



PORTATA

Load - Charge - Tragfähigkeit

| Portata max / Max s.w.l. Charge maxi / Max. Tragfähigkeit | |  10000 kg. / 5000 kg.  | | | | | | | | | |  12000 kg. / 6000 kg.  | | | | | | | | | | | | | | | | | |
|---|--|---|-------|-------|-------|-------|-------|-------|-------|-------|-------|---|-------|-------|-------|-------|-------|-------|-------|-------|------|------|------|------|------|------|------|------|--|
| Sbraccio / Radius Ausladung / Portée | m. | 27,5 | 33 | 37 | 43 | 50 | 56 | 60 | 66 | 70 | 27,5 | 33 | 37 | 43 | 50 | 56 | 60 | 66 | 70 | | | | | | | | | | |
| Campo di portata max da Max s.w.l. range from Charge maxi de Max. Tragfähigkeit von | 2,8 m a to à bis | 22,8 | 22,9 | 22,7 | 22,4 | 22,2 | 21,3 | 20,6 | 18,1 | 16,4 | 19,7 | 19,4 | 19,2 | 18,9 | 18,7 | 17,9 | 17,3 | 15,2 | 13,7 | | | | | | | | | | |
| Sbraccio (m.) Radius (m.) Portée (m.) Ausladung (m.) |  | 14 | 10000 | 10000 | 10000 | 10000 | 10000 | 10000 | 10000 | 10000 | 10000 | 12000 | 12000 | 12000 | 12000 | 12000 | 12000 | 12000 | 12000 | 12000 | | | | | | | | | |
| | | 18 | 10000 | 10000 | 10000 | 10000 | 10000 | 10000 | 10000 | 10000 | 9553 | 12000 | 12000 | 12000 | 12000 | 12000 | 11935 | 11488 | 9897 | 9553 | | | | | | | | | |
| | | 20 | 10000 | 10000 | 10000 | 10000 | 10000 | 10000 | 10000 | 8932 | 7912 | 11582 | 11568 | 11427 | 11280 | 11129 | 10586 | 10186 | 8761 | 7731 | | | | | | | | | |
| | | 22 | 10000 | 10000 | 10000 | 10000 | 10000 | 9624 | 9271 | 7996 | 7072 | 10395 | 10382 | 10255 | 10122 | 9985 | 9493 | 9131 | 7841 | 6908 | | | | | | | | | |
| | | 24 | 9413 | 9402 | 9363 | 9254 | 9145 | 8709 | 8387 | 7221 | 6378 | 9413 | 9402 | 9285 | 9163 | 9038 | 8589 | 8259 | 7080 | 6228 | | | | | | | | | |
| | | 26 | 8588 | 8577 | 8541 | 8442 | 8341 | 7939 | 7643 | 6570 | 5794 | 8588 | 8577 | 8470 | 8358 | 8243 | 7830 | 7525 | 6441 | 5656 | | | | | | | | | |
| | | 27,5 | 8222 | 8212 | 7841 | 7749 | 7655 | 7283 | 7009 | 6016 | 5490 | 8222 | 8212 | 8109 | 8001 | 7891 | 7493 | 7201 | 6158 | 5310 | | | | | | | | | |
| | | 30 | | 7268 | 7237 | 7151 | 7064 | 6718 | 6462 | 5537 | 4867 | | 7268 | 7175 | 7079 | 6979 | 6623 | 6361 | 5425 | 4749 | | | | | | | | | |
| | | 32 | | 6739 | 6711 | 6630 | 6549 | 6225 | 5986 | 5120 | 4493 | | 6739 | 6653 | 6563 | 6470 | 6136 | 5891 | 5015 | 4382 | | | | | | | | | |
| | | 33 | | 6550 | 6472 | 6394 | 6315 | 6001 | 5770 | 4931 | 4324 | | 6550 | 6416 | 6329 | 6239 | 5916 | 5678 | 4830 | 4216 | | | | | | | | | |
| | | 36 | | | 5838 | 5767 | 5694 | 5407 | 5195 | 4428 | 3873 | | | 5787 | 5707 | 5624 | 5329 | 5111 | 4336 | 3775 | | | | | | | | | |
| | | 37 | | | 5650 | 5581 | 5510 | 5231 | 5025 | 4279 | 3739 | | | 5650 | 5522 | 5442 | 5155 | 4943 | 4189 | 3644 | | | | | | | | | |
| | | 40 | | | | 5080 | 5015 | 4757 | 4567 | 3878 | 3380 | | | | 5026 | 4952 | 4687 | 4491 | 3795 | 3291 | | | | | | | | | |
| | | 42 | | | | | 4786 | 4724 | 4479 | 4298 | 3643 | 3169 | | | | 4735 | 4665 | 4412 | 4226 | 3564 | 3085 | | | | | | | | |
| | | 43 | | | | | | 4650 | 4590 | 4350 | 4174 | 3534 | 3071 | | | | 4650 | 4531 | 4285 | 4104 | 3457 | 2989 | | | | | | | |
| | | 46 | | | | | | | 4221 | 3998 | 3833 | 3236 | 2804 | | | | | 4167 | 3937 | 3767 | 3164 | 2727 | | | | | | | |
| | | 48 | | | | | | | | 4002 | 3788 | 3630 | 3058 | 2644 | | | | | 3950 | 3729 | 3567 | 2989 | 2571 | | | | | | |
| | | 50 | | | | | | | | | 3800 | 3595 | 3443 | 2895 | 2498 | | | | | 3800 | 3539 | 3383 | 2829 | 2428 | | | | | |
| | | 52 | | | | | | | | | | 3417 | 3271 | 2745 | 2363 | | | | | | 3363 | 3214 | 2681 | 2295 | | | | | |
| | | 54 | | | | | | | | | | | 3253 | 3112 | 2605 | 2238 | | | | | | 3201 | 3057 | 2544 | 2173 | | | | |
| 56 | | | | | | | | | | | | 3100 | 2965 | 2476 | 2123 | | | | | 3100 | 2911 | 2417 | 2060 | | | | | | |
| 58 | | | | | | | | | | | | | 2828 | 2356 | 2015 | | | | | | 2776 | 2299 | 1954 | | | | | | |
| 60 | | | | | | | | | | | | | | 2700 | 2244 | 1915 | | | | | | 2700 | 2189 | 1856 | | | | | |
| 62 | | | | | | | | | | | | | | | 2140 | 1821 | | | | | | | | 2087 | 1764 | | | | |
| 64 | | | | | | | | | | | | | | | | 2042 | 1733 | | | | | | | | 1990 | 1678 | | | |
| 66 | | | | | | | | | | | | | | | | | 1950 | 1651 | | | | | | | | 1950 | 1597 | | |
| 68 | | | | | | | | | | | | | | | | | | | | | | | | | | | 1522 | | |
| 70 | | | | | | | | | | | | | | | | | | | | | | | | | | | 1500 | 1450 | |
| Solo tiro semplice: Two reeving only: Mouflage à deux brins seulement: Nur zwei stränge: | | +150 Kg. | | | | | | | | | | +150 Kg. | | | | | | | | | | | | | | | | | |

Con sistema "ULTRALIFT" tutte le portate intermedie sono aumentate del 10%
All intermediate loads are increased of 10% if the crane is equipped with "ULTRALIFT" control
Les charges intermédiaires sont augmentées de 10% si la grue est équipée avec contrôle "ULTRALIFT"

ALTEZZA SOTTOGANCIO

Height under hook / Hauteur sous crochet / Hakenhöhe

